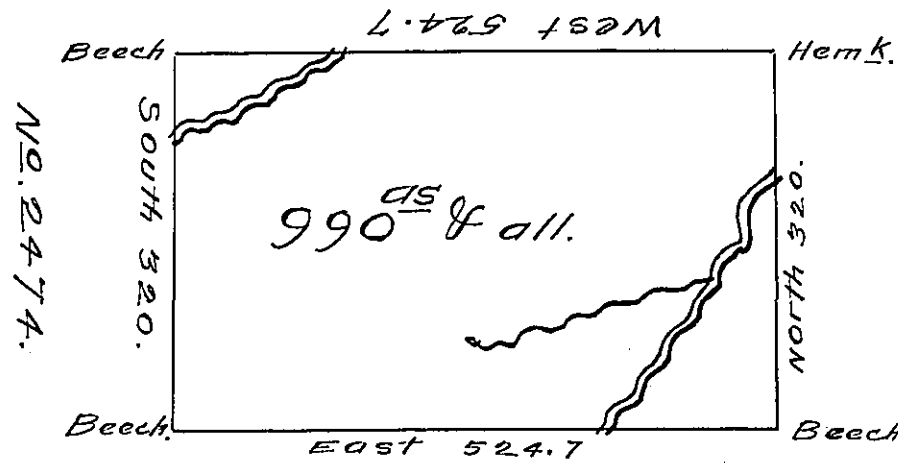


No. 35.



Situate about two Miles West of the Portage -
Branch of Alleganey - and Eight Miles South of the
Canoe place on the Alleganey River in North d -
County containing 990 Acres and the usual al-
lowance for Roads &c

Surveyed July 10th 1793 for Wilhem Willink -
Nicolaas Van Staphorst Christian Van Eighen Hen-
drick Vollenhoven and Rutger San Schemmels pen-
ninck in persuance of a Warrant No 2435 bearing
date December 12th 1792

John Canan D.S.

Daniel Brodhead Esq. S.G.

IN TESTIMONY that the above is a copy of the original remaining on file in
the Department of Internal Affairs of Pennsylvania, made
comformably to an Act of Assembly approved the 16th day of
February 1833, I have hereunto set my hand and caused
the Seal of said Department to be affixed at Harrisburg,
this fourteenth day of August 1907.

Henry Howard
Secretary of Internal Affairs.